

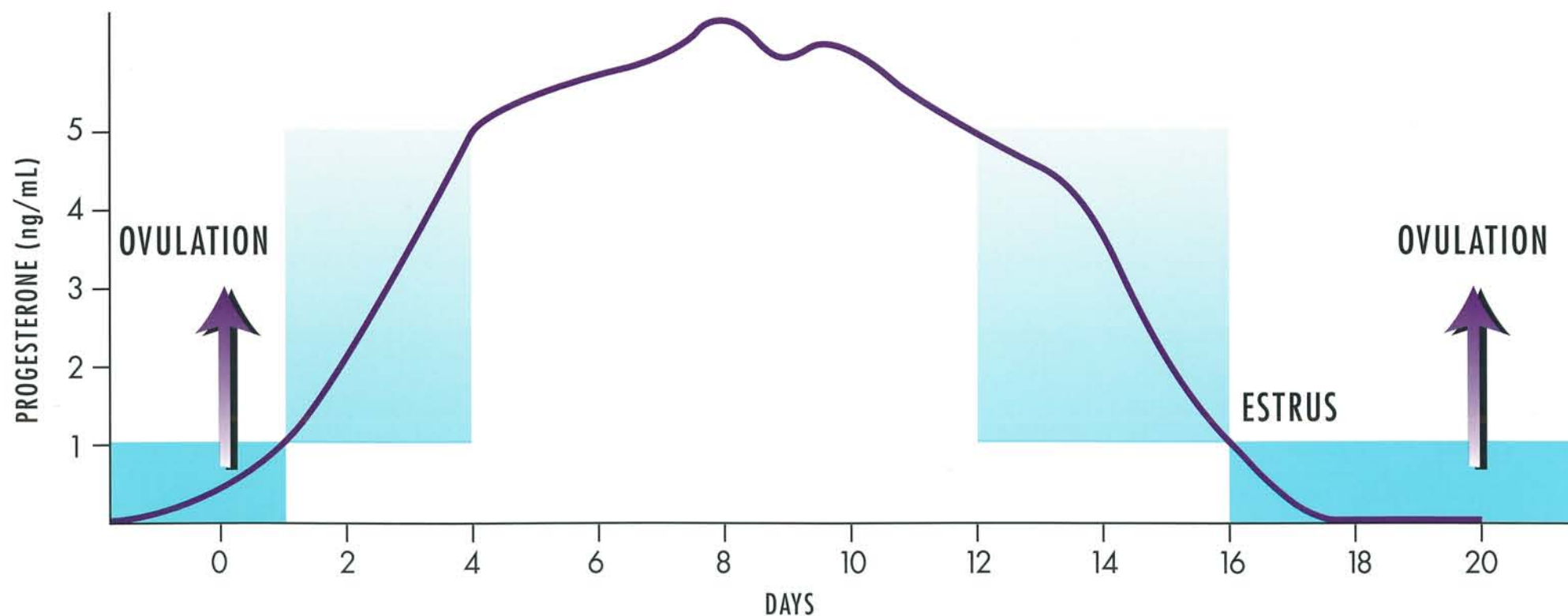
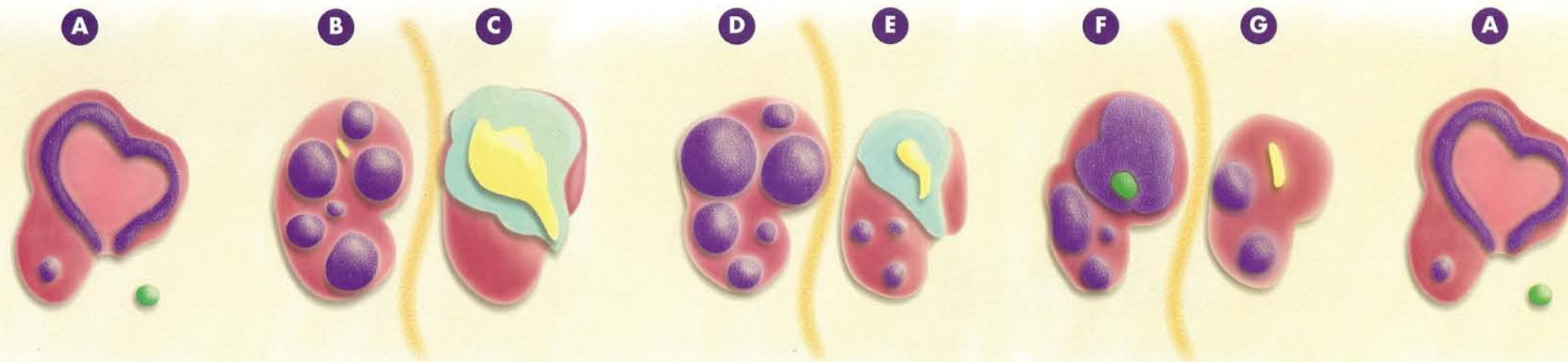


- A** Follicle ovulates and new corpus luteum is formed
- B** Developing follicles
- C** Fully functional corpus luteum producing progesterone

- D** Enlarging follicles
- E** Corpus luteum beginning to regress
- F** Largest follicle ready to ovulate

- G** Corpus luteum fully regressed and no longer producing progesterone
- A** Follicle ovulates and new corpus luteum is formed

# Progesterone Levels and Ovarian Activity During a Normal Equine Estrous Cycle



Bright blue is the test result for LOW progesterone levels
  Light blue is the test result for INTERMEDIATE progesterone
  White is the test result result for HIGH progesterone

**TARGET**  
EQUINE BREEDING SYSTEM  
*the test veterinarians trust*

1-800-999-1961